

Clarborough & Welham

Bassetlaw Community Newsletter

Quarterly: Autumn 2025

BCVS's Andria Birch Awarded MBE
Notts Wildlife Trust's latest news
Muddy Fork's Summer
Windows 10 Replacement
Retford Arts Hub News
State Pension Age checks
Friends of Bassetlaw Museum
Inspire's latest What's On Guide

Farming through Summer
Ageing in sudden bursts
Retford Heritage Open Day
Inspire's Autumn Courses
Postal Vote Reapplication
Elected Reps. contacts
Visiting Retford
Seth Ellis canal cruises

Clarborough Primary School's Summer Fair
and much, much more!

© 2025 Clarborough & Welham IT Group with generous support from Clarborough & Welham Parish Council and distributed by our tireless team of volunteers.

Material published in this Newsletter does not necessarily represent opinions of the Editor. Material submitted without full contact details will not be published. All publication decisions remain the responsibility of the Editor alone.

Visit our community website: www.clarborough-welham.org.uk for much, much more!

Inspire College courses this Autumn

Inspire College prepares young people not just for work, but for life! The courses and supportive tutors help to build confidence, gain qualifications and learn important life and employability skills - for the world outside of College.

Inspire College has a number of Entry 3, Level 1 and 2 courses with places available for 16 to 19-year-olds (up to 24 with an Education, Health and Care Plan) for September 2025.

Funded by
UK Government

Inspire
Adult Learning
Culture | Learning | Libraries

FREE* IT, Digital and Work Skills Courses

Tailored for businesses in Bassetlaw

If you're a local business in Bassetlaw, and you would like to boost the productivity and skills of your workforce, Inspire Adult Learning can help!

We can provide courses tailored to the needs of your business and your employees, including digital skills, artificial intelligence, leadership and management, project management, workforce development, maths, English, ESOL, IT plus many more!

*IT/Digital courses are free to all regardless of circumstance. All other work skills courses are free to employees aged 18 or over who are in receipt of Universal or Tax Credits.

Boost
productivity

Boost skills

Boost
retention



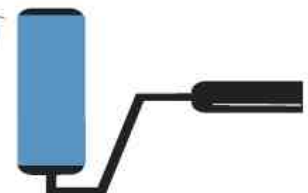
For much more about Inspire College, go to their website:

<https://www.inspireculture.org.uk/college-16-24/>

For much more on Inspire's Adult Learning in Bassetlaw:
<https://www.inspireculture.org.uk/skills-learning/free-courses-for-work-and-employment-in-bassetlaw/>

ANDI GRAY

PAINTER & DECORATOR



- INTERIOR & EXTERIOR
- QUALITY PAPER HANGING
- DOMESTIC & COMMERCIAL
- QUICK & QUALITY TURNAROUND ON RENTAL PROPERTIES

07837 370827

andigraypropertyservices@hotmail.co.uk

A LOCAL TRADESMAN ON YOUR DOORSTEP

A professional service to a high standard



Bassetlaw CVS CEO recognised in the Kings Honours

Bassetlaw Community & Voluntary Service is proud to announce that its CEO, Andria Birch, has been nominated for an MBE in the prestigious 2025 King's Birthday Honours List for 'Services to the community in Bassetlaw'. The recommendation was made by the Prime Minister on the advice of the independent Main Honours Committee following an independent assessment process.

The nomination is a testament to Andria's dedication and tireless efforts in representing the voices of the Bassetlaw Voluntary and Community sector (VCSE) and the communities we serve. Her leadership and commitment has contributed to the growth and development of the sector, supporting our sector to make a lasting impact on the lives of many residents.



After 25 years serving the Voluntary and Community Sector, Andria also currently serves as Chair of the Worksop Town Board now known as 'Worksop Together'. Building on strong local partnership work, and working with the board, Andria continues to champion working and growing together, and advocates for genuine and inclusive community involvement in all community initiatives and regeneration work. Her work in this capacity has further solidified her reputation as a passionate and effective leader.

Andria said: "I am honoured and humbled by this nomination as there are so many great leaders working at every level in Bassetlaw. It is my privilege to work alongside dedicated colleagues and partner organisations across our region. This recognition reflects the work of everyone in our sector and local partnerships who work tirelessly for our communities, and I look forward to continuing to build on this work moving forwards."

Elizabeth Prime, Bassetlaw CVS Chair of Trustees added: "We at BCVS are all delighted that Andria's commitment to bringing about positive impacts which touch the lives of so many local residents has been recognised in this way. It is a real tribute to all her hard work within the community and voluntary sector in Bassetlaw, and the tangible benefits that work has delivered."

The nomination is a well deserved recognition of Andria's contributions and her relentless pursuit of a fairer world for all. Bassetlaw CVS extends its heartfelt congratulations to Andria and looks forward to celebrating this achievement.

Joanne Wakefield

BCVS Communications & Contract Manager

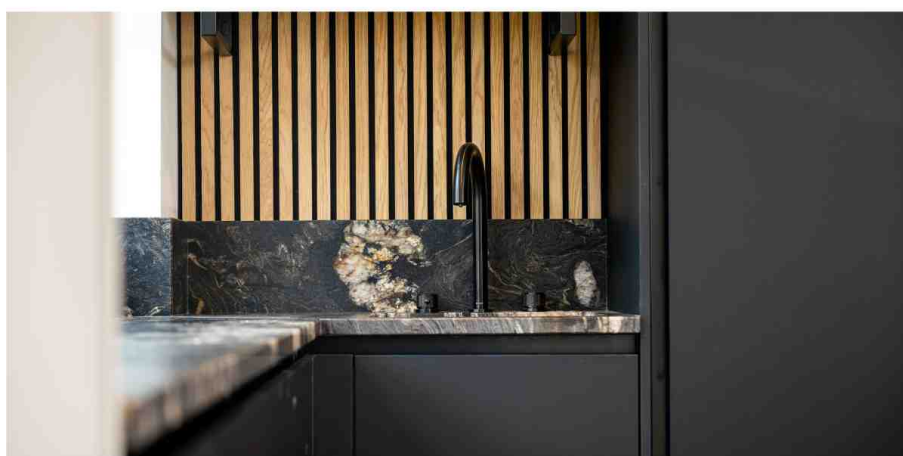
Find my pointer in Windows 11

When using Windows 11 do you get annoyed when you can't find your pointer on the screen?

A quick solution is to simply tap one of the Ctrl (Control) keys, either the left or right one at the front of your keyboard will do.

The result will be a fast-shrinking circle focused on you pointer's position – try it!

Editor



Kitchens - Bathrooms - Boilers - Heat Pumps and more...

Contact us for more information

01777 702684





Summer Fair Success Brings in Record Numbers!

Sunshine, stalls and a fantastic community spirit made this year's Summer Fair one to remember. With a record number of stallholders and more than 150 visitors through the gates in just two hours, the event was a huge success for all involved!

The fair, held in support of Clarborough Primary School, was organised by Helping Hands PTA, a small group of parents working together to support the school and create opportunities for all children, now and in the years to come. From handmade crafts and personalised gifts to delicious food and family activities, there was something for everyone to enjoy. The fair not only showcased an incredible range of local small businesses but also brought families and neighbours together in celebration of community.

We're proud to share that all funds raised will go directly back into the school, helping to enhance resources, experiences, and events for the pupils.

A huge thank you goes out to all the brilliant stallholders and to everyone who came along to support the day. We were especially grateful for the generosity of local and surrounding village businesses who kindly donated prizes to our raffle, helping us raise even more and spread the excitement further.

Special thanks to our prize donors:

1. Lubylu Personalised Knitwear
2. Ashleigh's Dainty Little Bows
3. Event Industry News
4. Flaura's Florist
5. Noons Balloons
6. Sammy's Rainbows
7. Obviously Optical
8. Mini Kixx Retford
9. Forest Fae
10. CleanQueen
11. Morrisons Retford
12. Becketts Heath - Gainsborough
13. Impulse Hair Salon
14. Boots – Worksop
15. Playwell Corner
16. Retford Golf Club
17. Your Space Retford
18. Batemans Brewery
19. The Slumber Sisters
20. The Sherwood

Your support helped make the event a huge success, and we're already looking forward to the Christmas Fair on Friday 5th December – save the date!



For more information on our upcoming events email:

pta@clarborough.notts.sch.uk



See page 24 for some very late school news!





We're here to
support you in
your own home

 Home Help

 Companionship

 Personal Care

 Dementia Care

 Live-In Care

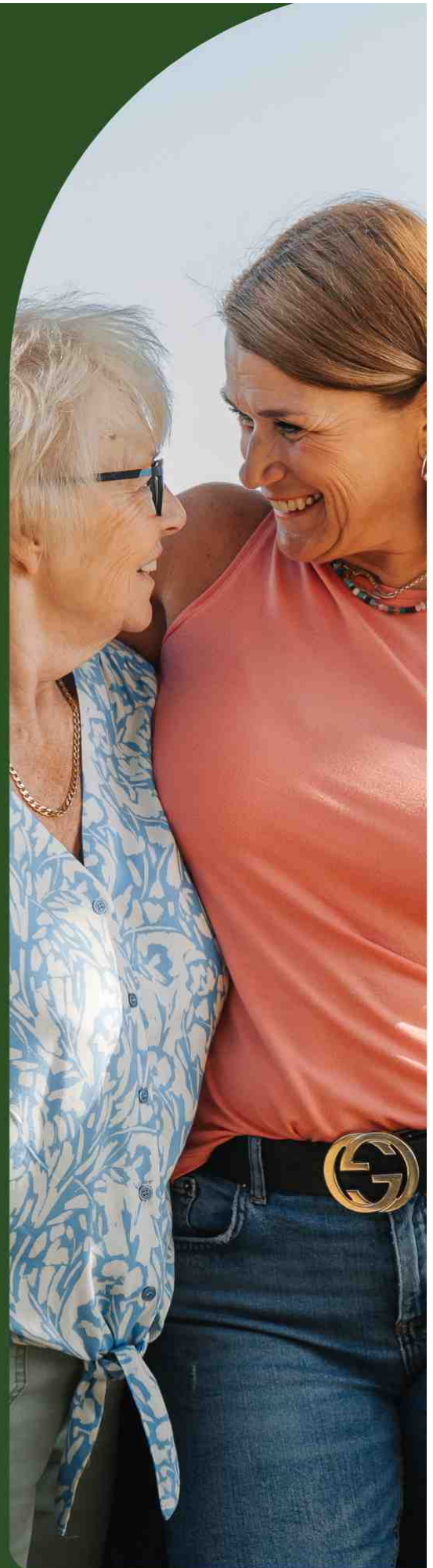
 Healthcare at Home

 Nail Care

To find out more, call our friendly team

01777 712 629

Each Home Instead franchise is independently owned and operated. Copyright Home Instead 2025.





After a cold and miserable spring, it is good to report that Muddy Fork, Retford's Gardening for Wellbeing charity, is now enjoying excellent growing conditions and starting to eat this year's produce. The combination of sunshine and rain (until the rain stopped again) has brought the garden on apace; such a contrast to last year when nothing grew well. Muddy Fork has also continued to benefit from a wide range of community support, the latest being in the form of blueberry bush donations from ASDA, currently awaiting the right soil to create a blueberry bed.

It will be next year before there are blueberries to eat, and the same goes for the new strawberry plants, but meanwhile there is plenty to enjoy. Onions and the first of the potatoes have been harvested, the courgettes are coming, the squashes are in flower, the beans are doing well, there are carrots, cabbages and cauliflowers looking good and many smaller seedlings still to get going. Most spectacular of all is the array of tomatoes in the polytunnels, looking to be heading towards a bumper crop.

Gardening in a nature reserve has always offered both challenges and rewards. The Olympic high-jumping rabbits have been excelling themselves, with burrowing activity now appearing even in one waist-high container. Their steel incisors appear to be able to cut through wire netting and their steel-capped boots tried to penetrate a concrete block at the base of a gate to some of the raised beds. Other predators inevitably had a good go at the beans and cabbages. On the plus side, the CCTV captured an owl in flight, and best of all, a visit from wildlife photographer Gary Hobson produced some wonderful photos of rare moths – he plans to come back to see what else he can find. (photos copyright Gary Hobson and reproduced with his permission) – see opposite ►

For further information, if you might be interested in volunteering, or could make a donation, check out the website at www.muddyfork.org, while referrals, whether self-referrals or on behalf of someone else, can be made directly to rose.muddyfork@outlook.com. Visitors to the garden are always welcome.

LAWNMOWERS

Tony Halford



**Plant & Grass
Machinery
Specialist**

**Tony Halford Lawnmowers, Nelson Street,
Retford, Notts DN22 6LP**

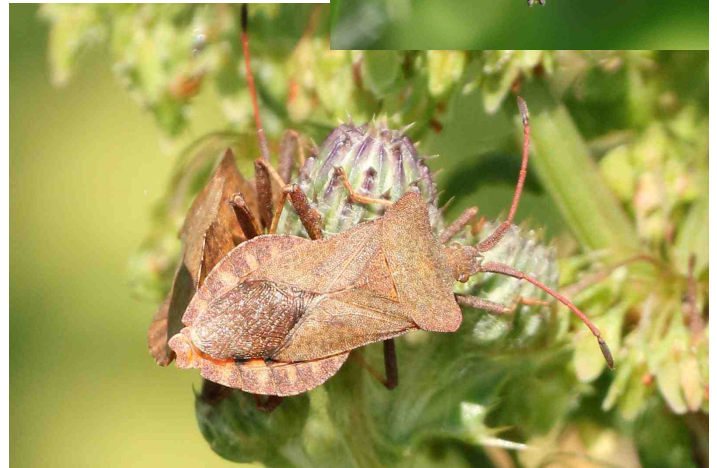
Tel. 07976 941 407

Email: thlawnmowers@hotmail.co.uk

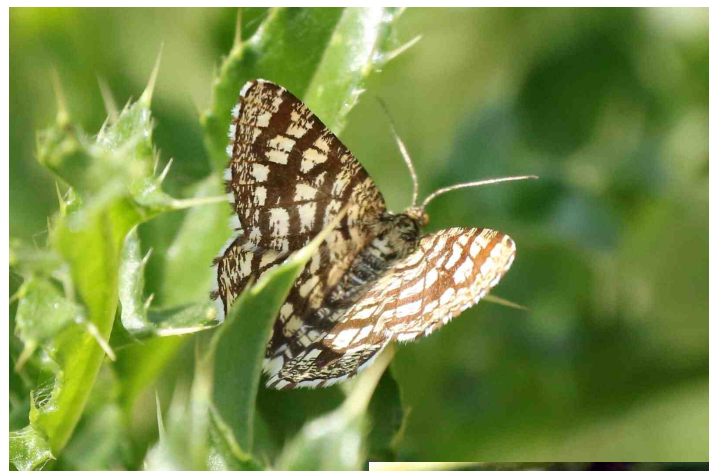
[Right] Large Red Damselfly, *Pyrhosoma nymphula*



[Below] Dock Bug, *Coreus marginatus*.



[Below] Lattice Heath moth, *Chiasmia clathrata*



[Right] Hawthorn Shield Bug, *Acanthosoma haemorrhoidale*





Nottinghamshire
Wildlife Trust

Work gets underway to develop new Natural Flood Management scheme for Shirebrook & Worksop

Back in February 2024, dozens of projects designed to harness natural solutions including tree planting and the creation of wetland habitats to reduce flood risk were given the initial go ahead by the Government - including a scheme which will see Nottinghamshire Wildlife Trust work with partners including Nottinghamshire County Council, Derbyshire Wildlife Trust, Yorkshire Wildlife Trust and Nottingham Trent University and the Environment Agency, to reduce flooding in the Shirebrook and Worksop area.

The 'Saving Shireoaks & Worksop through NFM' project has been funded by the Environment Agency as part of the £25 million Natural Flood Management Programme and will see £1.1million invested in nature-based solutions to increase flood resilience while providing wider benefits to the environment, nature and society.

Following the development of a detailed business and delivery plan, the Wildlife Trust team is now in place and working with partners and landowners to put the exciting plans into action.

The programme forms part of the Government's commitment to increasing flood resilience across the country by investing in natural flood management (NFM) processes which either protect, restore, or in some cases mimic, natural functions within floodplains and river catchments, and along our coast, to slow the passage of water and store water away from sensitive areas. Funding was awarded as part of the largest package of government investment to date in natural flood management schemes – with applications being reviewed by the Environment Agency, Defra and Natural England.

Having long championed the NFM approach, Nottinghamshire Wildlife Trust is delighted that our proposal to work with farmers and other landowners has been backed – building on our local relationships and experience gained whilst acting as **Catchment Hosts for the River Idle** which has a vision is 'To conserve and enhance the Rivers Idle, Ryton, Poulter, Meden, Maun, their tributaries and surrounding land, to create a healthy and wildlife rich water environment for the benefit of both people and biodiversity.'



The Trust has appointed an experienced project team to deliver the programme – fresh from successfully delivering the charity's largest ever river habitat restoration programme – which also included NFM features. The Trust now plans to work closely with local landowners to develop a range of features, including ponds, bunds, leaky barriers, wetland habitat, tree planting

and the restoration of floodplain connections to help slow and store water along the catchment upstream of the River Ryton. This will help alleviate the risk of flooding in areas such as Shireoaks, Rhodesia and Worksop – which have been impacted by flooding in recent years.

Speaking about the delivery phase of the Scheme, Ryton NFM Project Manager Ian Higginson said:

"We are very excited to now be able to deliver the project and are already reaching out to local landowners, arranging site visits and looking at nature-based solutions to reduce flood risk across the Ryton catchment. We are very pleased and encouraged by the response of everyone so far and are looking forward to meeting more landowners and communities over the coming months. We are hoping to start initial works on some sites later this year. With the support of landowners in the catchment we hope to be able to store and slowly release enough floodwater to fill over 30 Olympic sized swimming pools."

As well as reducing flood risk, this approach helps deliver new wetlands and ponds which provide important habitat within the catchment - these features also provide opportunities for sediment to settle, improving water quality. As well as providing habitat for species such as amphibians and the threatened water vole, ponds and wetlands can also provide ideal spawning area for fish.

As we face up to the challenge of tackling the climate and nature crises and look for more sustainable and affordable solutions to prevent flooding from damaging homes and business premises, this latest support for Natural Flood Management is very welcome. In addition to embracing natural solutions, this approach harnesses the benefits of partnership – with charities and councils collaborating with landowners to develop and deliver schemes that help the wider community.

Ian added:

"Hopefully, the scale of investment in this and other NFM projects across the country will go a long way to ensuring that natural techniques become much more widely used to tackle the increasing frequency and severity of flooding – complementing more traditional engineered defences such as flood walls. The funding will help protect people, property and businesses from the impacts of flooding whilst helping boost groundwater stores, protecting valuable soils, locking away carbon and enhancing greenspaces for communities. By embracing natural solutions, we can make our landscape and our towns and cities much more climate resilient whilst putting nature into recovery."

Jennifer Kril, Living Rivers Officer at Derbyshire Wildlife Trust, added:

"Derbyshire Wildlife Trust is thrilled to be working with landowners, local communities and partners to implement nature-based solutions with a catchment-scale approach to help reduce flood risk downstream in Nottinghamshire, and across the river catchment. By creating space for water and wildlife, we're not only helping protect communities but also building a wilder, more resilient landscape for the future."

"Two things are infinite: the universe and human stupidity; and I'm not sure about the universe."

Albert Einstein (1879-1955)

Community, Crops, and Camaraderie

Farming Through Summer in Trying Times. As the sun beats down on our fields and the countryside, it's clear that summer is well underway and so is harvest. For as long as many of us can remember, the second week of July marks one of the earliest starts to harvest in years. The warm, dry weather throughout June and into July has helped ripen the grain beautifully, with barley being the first crop off the fields. Despite one of the lowest yearly rainfall averages in decades, the barley has done remarkably well.

Sadly, this year has also brought a somber note to our family with the recent loss of mine and my wife's stillborn baby. In such times of sorrow, the presence of Reverend Mark Cantrill has proven invaluable. Mark continues to be a guiding light in the village always available with compassion, and a listening ear, and unwavering support. His role as our vicar stretches far beyond the pulpit, and our community is stronger because of him.



As always, the farming community rallies together whether that means hopping on a neighbour's tractor, helping stack bales, or simply offering company over a cuppa in the yard. A special thank you goes out to the Bartle Brothers family and to David Hogg for their continued support and willingness to lend a hand when it's needed most. And in the quiet moments, people like Nigel Walter remind us of the value of friendship, conversation, and kindness. If you haven't tried his strawberries from the local Spar, you're missing out - they're a real treat!

Beyond the barley, not everything in the fields is quite as promising. Our spring-drilled crops beans and linseed are showing signs of stress due to the lack of moisture. Likewise, while hay-making in June was unusually easy thanks to long days and uninterrupted sunshine, grass yields are considerably down, adding pressure to winter feed supplies.

And today, as this article goes to print on July 15th we note it's St. Swithin's Day. According to folklore, rain today could mean 40 more days of it. While we do need some rain to replenish the soil, many of us are hoping this old English saying doesn't hold true this year especially with so much of the corn still to be harvested.

Looking ahead, attention is already turning to the next season. Planning for autumn drilling is well underway. One crop under much scrutiny is oilseed rape. Due to the EU-wide ban on neonicotinoid seed dressings, controlling the flea beetle has become an uphill battle. This tiny insect poses a massive threat to establishment, and for many farmers, sowing oilseed rape has become more of a gamble than a strategy. Yet, if grown successfully, it remains one of the most profitable break crops. For ourselves, we're taking the risk on 90 acres at a seed cost of over £3,000. Fingers crossed the gamble pays off.



In farming, every year brings new challenges, but it's the strength of our community, the resilience of our land, and the shared sense of purpose that carries us forward. Here's to a safe and successful harvest season for all. Let's see what the rest of the summer and the beginnings of autumn brings to the countryside in Clarborough and Welham.

Ross Spencer Joyce

Why visit Retford?

If you are trying to encourage friends or family members to visit Retford, point them in the direction of:

<https://choosewhere.com/retford-visitor-guide>

This website has a wonderful summary of key aspects of Retford's history together with the town's long list of highlights, both things to see and also things to do.

It's also worth pointing them to our community website's *Local History* section for a substantial outline of the town's history plus lots of things to do.

Editor

Bassetlaw



Centre

Could you be a volunteer driver?

Bassetlaw Action Centre urgently needs volunteers for the Community Car scheme, our Wheelchair Accessible Vehicle and our two Minibuses



Scan for more info



Training provided



Expenses paid



From only a few hours per week



Make a difference in your community

Download the application form from our website or give us a call if you need more information.



www.bassetlawactioncentre.org.uk

01777 709650



Canal Street, Retford,
Notts DN22 6EZ

Registered Charity No: 1106908
Company Registered in England and Wales No: 5172066

Human ageing comes in three sudden bursts

Recent research has been pulling together evidence that humans usually go through a number of rapid ageing events that commonly occur in our 40s, 60s and 80s. This is quite a different from our commonly held view of ageing being a steady decline throughout life.

Various researches had been studying blood plasma – it's liquid part – and in a paper published in 2019 researchers showed how 2925 proteins in blood changed with ageing. They took blood samples from 4263 people with ages between 18 and 95, expecting to find these levels to change steadily as people aged. Wrong!

To their surprise the results from their participants grouped into four age-linked groups: those under 34 years old, those aged 34 to 60, those aged 61 to 78 and the over-78s. The protein analyses in these samples showed some proteins concentrations suddenly rising dramatically while others plummeted. This finding also included enrichment of some proteins in older people that were already known to be associated with Alzheimer's and cardiovascular diseases.

The conclusion of the researchers was that humans in their research group appeared to undergo three rapid pulses of ageing at 34, 60 and 78 years.

What causes these dramatic changes in ageing remains an ongoing research scene but currently the view is that accumulated molecular damage to some of these key proteins (and other chemicals) eventually overwhelm the body's ability to deal with it. Our natural repair systems can cope with these damages up to a point but when exhausted our body's slump into a new state.

Researchers are starting to think that these ageing studies might, one-day, result in us carrying labels of young, adult, mature, ageing and old or similar terms depending on our own blood analysis. What could follow is exploration of therapeutics and life-styles that could either push these ageing transitions further into the future or even reverse some of the transitions!

Editor

"If you want to know what a man's like, take a good look at how he treats his inferiors, not his equals."

J.K.Rowling (July 1965 -)

Computer Sage

Healing Computers

Need help or advice for your computer?
No problem too big or too small.

Hardware, software, virus, Windows, wireless, Internet, upgrades, training or just plain help and advice.

£30 ph, £60 max, no fix no fee, no callout.

Get the job done, 24/7

Call: 07807350355

Email:

computersage999@gmail.com



Which? review of Ubuntu Linux as replacement for Microsoft's Windows 10

The Consumers Association's Which? Tech magazine recently recommended Ubuntu Linux as a 'best choice' for users seeking a replacement for Microsoft's Windows 10 when support for that system comes to an end on October 14th, 2025.

Which? noted that Ubuntu Linux was 'an easy recommendation' because of its ease of use and available support. They also recommended the Long-term Support version (LTS) which really benefits from the world-wide online community that keeps all aspects of Ubuntu up-to-date. A key aspect of moving to any version of Linux is that it is open-source and so completely free*.



Ubuntu

Clarborough & Welham IT Group is aiming to restart classes at Clarborough Village Hall (DN22 9LN) in October based on its suite of Ubuntu-powered laptops. Classes may well be surprised how easily we can adapt to Linux after a 'lifetime' of Microsoft Windows experience. This will provide both a useful addition to class-members CVs and also a platform to address very useful topics – everything from easy word processing to camera or phone images editing alongside some useful tricks to make your Google-searching more effective.

Don't worry about the Linux aspect of planned classes – you can bring your own laptop – and you will quickly develop skills of working across two, separate, operating systems – quite a boost to your personal CV!

Current plans are for either Saturday afternoon sessions (13:00-14:30) from 4th October to 1st November or Wednesday mornings (10:00-11:30) from 1st October to 29th October.

So, to help planning, please get in touch with Greg as soon as possible on : **01777 700 918**

or email clarboroughwelham@gmail.com

***Ubuntu Linux, along with all other Linux distros (distributions/versions), is a crucial feature of the global open-source software movement. See page 22 for a little more on this important topic.**

As a reader, you should be aware that this Newsletter is produced using Apache OpenOffice, one of the leading open-source office software suite for word processing, spreadsheets, presentations, graphics, databases and more.

Many of the images gracing the pages of this Newsletter have been created or edited using GIMP (GNU Image Manipulation Program) which is another, free, open-source application.

Editor

Retford Heritage Open Day

Welcome to England's largest festival of history and culture! This year the national programme runs from 12th to 21st September with the theme of Architecture.

Once more, on Saturday 13th September, Retford Civic Society is celebrating the wonderful buildings in the town! This is a chance to visit not only familiar places but also those not usually open to the public. It's all free!

Retford Masonic Hall and Trinity Hospital always attract a lot of interest and in addition the Sloswicke's Almshouses charity will be spotlighting the new buildings on Union Street. St Swithun's Church and St Michael's will be open and Grove Street Methodist Church particularly welcomes visitors to see their wonderful refurbishments.

There will be talks in the Denman Library and a chance to explore the local archive collection. The Majestic Theatre will welcome visitors for informal tours and Bassetlaw Museum will be hosting a demonstration of traditional building techniques and offering childrens' activities. Retford Arts Hub will have an exhibition of local artists' work together with photographs submitted to celebrate the Architecture theme.

A brand new leaflet, sponsored by Retford Civic Society, will be available to help you explore the architectural details of buildings around the Town Square.

Inspire's Retford Library will be holding a free talk entitled Architectural Curiosities of Retford ►

The Seth Ellis trip boat will be taking passengers from near the Bay Tree Café and trips can be booked on their website.

The day runs from 10:00 until 16:00. To find out more about what is happening check out the **Retford Heritage Open Day** Facebook page. Look out for programme leaflets at the end of August in the Library, Museum and the Arts Hub, then on Saturday 6th September from the Retford Civic Society Stall on Carolgate and finally on 13th September from the stall outside the Museum.

Climate change provides some useful holiday preparation!

As I am writing this, it has been pouring down with rain since breakfast time – something that hasn't happened in this part of the UK for months! Such is climate change.

Having said that, my wife and I arrived for our holiday in mid-June at Larnaca airport in Cyprus and realised that the super-hot weather we had experienced back home just



HERITAGE OPEN DAYS: ARCHITECTURE
12 – 21 September 2025

WELCOME TO ENGLAND'S LARGEST FESTIVAL OF HISTORY AND CULTURE!

Every September thousands of volunteers across England organise events to celebrate our fantastic history and culture. It's your chance to see hidden places and try out new experiences – all of which are FREE to explore.

Heritage Talk
ARCHITECTURAL CURIOSITIES OF RETFORD
FREE Retford Library 

1.30pm / Saturday 13 September

Retford is an ancient market town formed on the banks of the River Idle. It has a wealth of historic buildings along its main thoroughfares, each with their own unique story. Join Bassetlaw District Council's Conservation Manager, Michael Tagg, as he explores the town's special architecture, focusing on what makes each building unique and how they contribute to Retford's special character and appearance.

This event has been organised as part of RETFORD HERITAGE DAY 2025



ReNew
Carpet & Upholstery Cleaning

- High Powered Portable Equipment
- Commercial & Domestic Services
- Stain Removal / Reduction
- Satisfaction Guaranteed
- Dry in Hours NOT Days
- 'One Off' or Regular Cleans
- Fully Insured & Experienced
- CRB Checked Operators

Please Call Mob: 0755 000 2242
<https://www.renewccc.co.uk/>

before leaving had provided excellent preparation – Cyprus was only a couple of degrees warmer than Clarborough!

"Believe you can and you're halfway there."

Theodore Roosevelt Jr.
26th US President (1858-1919)

BCVS
Bassetlaw Community and Voluntary Service

BCVS
Bolsover Community and Voluntary Service

Our new Strategy for 2025-2030 has launched!

BCVS
Bassetlaw Community and Voluntary Service

#GrowingTogether 2025 - 2030

'Supporting our sector to make the world a better place'

BCVS
Bolsover Community and Voluntary Service

Our Vision

A sustainable, inclusive and healthy Voluntary, Community and Social Enterprise sector for Bassetlaw & Bolsover

We do this through support for:

Groups

Growing and supporting Voluntary, Community and Social Enterprise (VCSE) groups and partnerships to develop at every stage



People

Supporting and connecting people and volunteers with the right VCSE groups and services to meet their needs

Voice

Listening to and sharing the voices of groups and people to influence and shape policy, funding services and communities



01909 476118

bcvs@bcvs.org.uk



Contact Details

Bassetlaw CVS

The Old Abbey School
Priorswell Road, Worksop
Notts, S80 2BU

01909 476118
bcvs@bcvs.org.uk

Bolsover CVS

8a Cavendish Walk
Bolsover, Chesterfield
S44 6DB

01246 605075
bcvs@bcvs.org.uk



bcvs@bcvs.org.uk



www.bcvs.org.uk



01909 476 118

Clarborough's VE80 Evening

Clarborough Church came alive with community spirit and nostalgia as residents gathered to mark the 80th anniversary of VE Day in style.

Organised by the dedicated Jill and her team, the evening was a true celebration of unity and remembrance. Locals of all ages filled the historic church, reflecting on the sacrifices of the past while enjoying the chance to come together as neighbours and friends.

The event had its share of surprises that only added to the warmth of the night. When the DJ was unexpectedly delayed, Rev. Mark Cantrill stepped up to keep the celebration alive. His impromptu serenade of classic wartime tunes delighted the crowd, bringing smiles and even a few tears of happy nostalgia. It was a wonderful reminder of the resilience and spirit that VE Day itself represents.

As the evening continued, laughter and conversation flowed alongside music that transported many back in time. The decorations, echoing the red, white and blue of the Union Jack, created a festive yet respectful atmosphere befitting such an important milestone.

The turnout itself was a testament to Clarborough's strong sense of community. Residents embraced the opportunity not only to honour those who served during the Second World War but also to celebrate the peace and freedom won 80 years ago. Events like these highlight the power of shared memory in keeping history alive for future generations.



[Above] Jill and Fraser with VE80 decorations in Clarborough's St. John the Baptist Church.

A huge thank you goes out to Jill and the entire team who worked tirelessly to organise such a special occasion. And of course, to Rev. Mark Cantrill, whose musical interlude turned an unexpected hiccup into one of the evening's most memorable moments.

"It was truly wonderful to see so many people come together to honour such an important moment in our history," said Cllr Fraser McFarland. "Celebrations like this remind us not only of the sacrifices made but of the enduring strength and unity of our community."

Fraser McFarland



The Hub's Upstairs Gallery is currently hosting a new exhibition with the title "A Taste of Summer". It is certainly worth a visit especially if you are interested in purchasing an original work of art at a very reasonable price.

There are a number of workshops to look forward to in September including on 4th September John Redfearn Harris who is holding a workshop for beginners and improvers in watercolour, the topic of which will be a waterfall in a landscape. If you would like to give oils a go, then come along on 11th September to a workshop exploring the Derbyshire landscape. All materials are provided and the workshops run from 10:30 -13:30 at a cost of £25 per class.

The hub is fortunate to have 7 studios where resident artists can work and enjoy the company of likeminded people in a convivial and friendly environment.

One such artist is Lesley Pearson who has had a studio since 2022 and finds the interaction with fellow artists very supportive. Inspiration for her work comes from her time travelling on the canals and rivers of England and the proximity of the natural world provided her with a wealth of subject matter from kingfishers, voles, geese to frogs, birds and much more. These also found their way on to canal maps which she illustrates delicately in water colour and inks resulting in beautiful cards and art work. More recently Lesley has become interested in pottery and once again nature is her inspiration for her various platters, jewellery etc. Pottery also allows her to experiment with a more quirky side and her little houses, faces etc make delightful small gifts



If anyone is interested in renting a studio at the hub and becoming part of this artistic community or would like information about workshops, volunteering or becoming a member of the hub, call 01777 860 414 or email info@retfordartshub.com

A tribute to the legacy of the Avro Vulcan



XH558

TENTH ANNIVERSARY
OF THE FINAL FLIGHT



FOR THE
FIRST TIME
ON THE BIG
SCREEN

THE LAST FLIGHT OF THE VULCAN BOMBER

8th November 2025
Retford Majestic Theatre

Tickets: £30.00
(pre-booked seating required)

Event highlights

- Exclusive theatre screening
- Never-before-seen footage
- Personal stories and recollections
- Live Q&A session
- A moment of tribute

BOOK NOW - LIMITED SEATS AVAILABLE!

www.majesticretford.org



Chesterfield Canal Trust

Seth Ellis has the closest base to Clarborough & Welham. Seth Ellis is licensed to carry up to 12 passengers. Purpose built in 2005, she has central

heating, a toilet and a galley for serving hot and cold drinks as well as large opening windows all around. A large cruiser-style stern makes getting on and off the boat easy. Access to the passenger cabin is down a short flight of steps.

You are welcome to bring your own picnic, or we can stop at a canalside pub. Passengers may have a go at steering, under the supervision of our crew.

Bookings can be made online at:

<https://beyonk.com/provider/c6iekxnm-chesterfield-canal-trust?portal=true>

Where there are two prices, the concessions are for Under 16s; babes in arms go free.

Retford Town Lock return cruises at 10.00, 11.30, 13.00, 14.30 & 16.00 (1 hr, £7/£5)

September 13 (Retford Heritage Day – tbc).

Sunday Afternoon return cruises from Ranby (1 hr, £7/£5; 2 hr, £14/£10)

1 hr trip at 12.00; 2 hr trip at 13.30.

August 17, September 7 & 28.

Halloween weekend at 10.30, 11.30, 13.00, 14.00 & 15.00 (40 min, £4.50/£3)

October 25 & 26.

Santa Special cruises (£10)

Weekends in December. Bookings open on October 1st.

Chesterfield Canal Trust's Wildlife Watch

Barbara Ogley saw this Moorhen chick in Retford.

For many more Wildlife Watch photos, go to our community website from the home page's menu:



Local Environment > Chesterfield Canal and follow Wildlife Watch at the top of that page. This has monthly selection from 2023.

Postal Vote Reapplication

The way you reapply for a postal vote has changed. Postal votes now expire every three years.



Bassetlaw
DISTRICT COUNCIL

www.bassetlaw.gov.uk/postal-vote-reapplication

Following changes introduced by the Elections Act 2022, postal voters are now required to reapply for their postal vote every three years.

All postal voters who made their current application **before 31st October 2023** are required to reapply for their postal vote by 31st January 2026.

We sent an initial email to all affected electors we hold an email address around 7th July 2025 notifying them that their entitlement to vote by post will expire on 31st January 2026 and if they wish to continue to vote by post they will need to submit a new postal vote application.

All other postal voters affected, for whom we do not hold an email, will have received a letter from us.

Contact details plus all other postal voting registration can be found on <https://www.gov.uk/apply-postal-vote>

or, more easily, by going to our community website, www.clarborough-welham.org.uk and selecting Bassetlaw District Council from the home page's menu and then selecting **here...** from this near the top of the page:

Postal Voters need to check the state of their registration renewal [here...](#)

Were you born between April 1960 and March 1961?



Department
for Work &
Pensions

The Department for Work and Pensions is encouraging everyone to check their State Pension age.

The Pensions Act 2014 set out the timescale for the increase in State Pension age from 66 to 67, affecting people born between 6 April 1960 and 5 March 1961.

If you were born between these dates, check your State Pension age to find out the earliest date you'll be eligible for your State Pension.

You can keep working after you reach State Pension age. 'Default retirement age' (a forced retirement age of 65) no longer exists.

To find out much more, go to:

<https://www.gov.uk/state-pension-age>

PAINTED KITCHEN & FURNITURE SPECIALIST

With over 30 years experience making and painting kitchens, bedrooms and more.

We also offer a complete refurbishment service.

Using a highly durable paint finish, we can transform your current furniture in the colour of your choice.

However, if you want something totally new - we can also do that.



SCOPE SPRAY SERVICES



Call Darren on 07999 489 624
scopesprayservices@gmail.com



10% discount when mentioning this advert (terms & conditions apply)



Bathroom recycling guide

Whilst recycling in the kitchen is generally well established, bathroom recycling lags behind, with only about 50% of bathroom waste being recycled.

This can be due to the bathroom being a smaller room so it is harder to have a dedicated recycling bin, or just that people are not sure what items can be recycled.



To make things easier, we have created a checklist of bathroom recyclables:

- Shampoo bottles
- Conditioner bottles
- Shower gel and plastic bubble bath bottles
- Cardboard boxes e.g. toothpaste or soap boxes
- Toilet roll tubes
- Bathroom cleaner and bleach bottles
- Deodorant aerosol can
- Shaving foam can
- Plastic hand soap bottles
- Plastic moisturiser or lotion bottles

Just remember to make sure everything is empty, clean and remove the top if it is a spray or pump action bottle (please place this in the general waste bin).

If everyone in the UK recycled one bathroom cleaner bottle, enough energy could be saved to vacuum around 82,460 homes!

A major step to 'saving our planet'?

Symbiosis is any close and long-term biological interaction between two organisms of different species. In 1879, Heinrich Anton de Bary defined symbiosis as "the living together of unlike organisms".

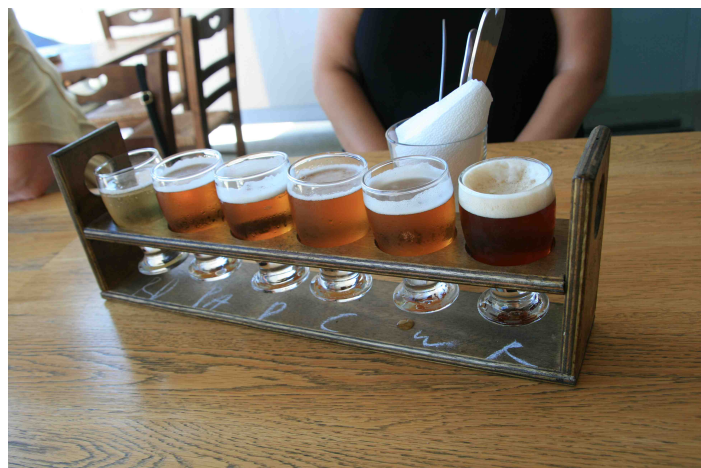
Symbiosis comes in a vast array of different forms on a continuum from parasitism at one end to mutualism at the other.

Recent research has been looking at how symbiosis may be a key to unlocking our future. Legumes such as beans and lentils use symbiotic bacteria to make their own fertiliser from nitrogen in the air. Work is currently underway to try to engineer other crops, such as key cereals like wheat and corn, to produce their own fertiliser. Since roughly half of the calories that we eat come from these two crops, developing them to produce their own fertiliser would massively cut the need for chemical fertilisers to be poured onto fields.

Editor

Rhode Island's secret!

Introduction to Mule's Microbrewery on Rhodes Island includes these fascinating samples, two of which were beer/wine blends; vin (wine) + bière (beer) = vière. Two of our samples were very pleasant vière.





Clarborough & District WI

In July we welcomed our friends from Hook WI. This is a long standing friendship where we have alternating visits to each other's meetings. This year due to our growing numbers we hosted our meeting at Hayton Village Hall. Readers may not be aware that the "District" in our title covers Hayton and Welham.

We have no meeting in August but are arranging an outing to Springfield Shopping Centre, Spalding on 12th August.

The rest of our meetings are as follows:

- 8th September Speaker Christine Abbott who will talk about Life Afloat when she lived on a narrowboat.
- 13th October Speaker Bruce Barnett, the subject being Saving Lives with CPR
- 10th November Caroline Heslam teaching us the Art of Crafting Christmas cards and Tags
- 8th December Our Christmas Party

Our meetings start at 14:00 in Clarborough Village Hall.

Visitors are welcome to any meeting. There is a small charge of £5 which includes a raffle ticket and refreshments. We look forward to welcoming you to our meetings.

Lucy Richardson
(07966 452 249)

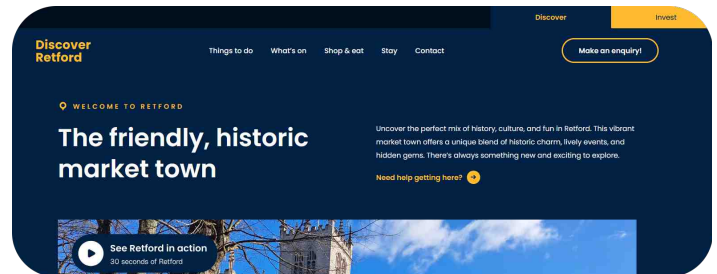
Discover Retford website

A new tool for keeping up-to-date with everything about Retford is the **Discover Retford** website :

<https://www.discoverretford.co.uk/>

The website's homepage says it all really with headings:

Things to do, What's on, Shop & eat, Stay, Contact.



A separate button is highlighted at top right to '**Make an enquiry**'

If you are a regular user (hopefully!) of our community website **www.clarborough-welham.org.uk** this has a link to the *Discover Retford* website at the top of its home page.

Editor

"Don't walk in front of me... I may not follow
Don't walk behind me... I may not lead
Walk beside me... just be my friend"

Albert Camus (1913-1960)



Retford chiropractic wellness centre

Serving Retford and surrounding areas for over 30 years

Our Services:

- Chiropractic
- Neuro Rehabilitation
- Acupuncture
- Photobiomodulation
- Massage
- Hypnotherapy
- Food Sensitivity Testing
- Beauty Treatments
- Endoscopic Microsuction (Ear Wax Removal)



At Retford Chiropractic Wellness Centre, we believe everyone deserves the opportunity to achieve their full health potential. Our mission is to support you and your family on your journey to optimal wellness with expert care and a compassionate approach.

As a fully GCC-registered practice, we adhere to the highest professional standards, ensuring you receive safe and effective care tailored to your individual needs. Let us help you take the next step toward a healthier, happier life.



Choosing the right treatment can feel overwhelming, which is why we offer a **FREE** chat with any of our practitioners to help you find the best option for you. This session helps you explore your options and receive expert guidance tailored to your needs.

Contact Info:

- 01777 710 720
- www.retfordchiro.co.uk
- 67 Grove St, Retford DN22 6LA



Your NEW What's On Guide for August - November 2025 has arrived! It's Inspire's biggest-ever What's On Guide and we've packed 40 pages full of exciting events and activities and for all.

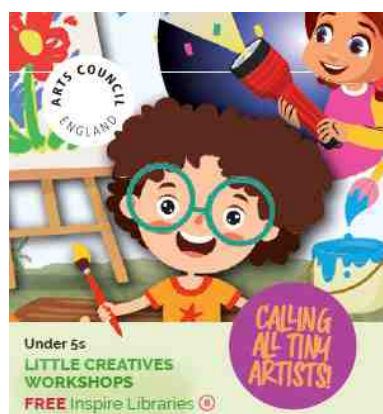
Go to: <https://www.inspireculture.org.uk/>, where the link to Inspire's What's On Guide is near the top of the page – you can't miss it!



Don't forget you can also pick up a copy from your local library and Nottinghamshire Archives, **and also, your community website : www.clarborough-welham.org.uk**

This is an amazing collection of every possible sort of event that Inspire has to offer, so get your copy and then get onboard with your favorites.

Here are just a tiny selection from Inspire's *What's On August – November 2025* Brochure...



BE INSPIRED!

Learn local, go far!

Develop your skills and enhance your CV with Inspire Adult Learning

Inspire's Adult Learning courses aren't just for fun – we have plenty of ways for you to upskill and get ahead in your career!

CAREER-BOOSTING Accredited Courses with Inspire Adult Learning

AUTUMN TERM PROGRAMME OUT NOW!

INSPIRE COLLEGE Enrolling NOW

Get your copy of Inspire Libraries What's On August-November, 2025, now for dozens of forthcoming events.



Do you require any landbased training? North Notts Training Group

"Cost effective professional training for a safe and efficient tomorrow"

Health & Safety, Pesticides, Chainsaws, Fork Lifts, First Aid, Abrasive Wheels, Vermin Control, plus e-learning



info@nntg.co.uk
07855751689
www.nntg.co.uk



Friends of Bassetlaw Museum

The weather on Thursday, 17th July, started out looking a bit troubling with some slightly 'threatening' clouds. However, our group of Friends got to work in early afternoon for our annual 'Picnic party'.

Open to both Friends as well as members of the public, by 17:00 we had both cakes laid out on our welcoming table as well as Irontree Alpacas and Llama waiting expectantly in the garden.

By our 'official' opening time of 18:00 a steady stream of individuals and families were coming round to the museum's 'back garden' accompanied by some progressively brighter weather!



With a range of games on the grass for children, the Alpacas and Llama pulling lots to meet them and the message getting around quite quickly that there were some fantastic cakes available inside and the evening gave a wonderful flavour of Retford's great atmosphere. We were also pleased to greet a pleasing set of new Friends who came 'onboard' at the picnic.

With the onset of the school summer holidays, August is set to be a quiet month for the Friends of Bassetlaw Museum. The Committee is going into recess and the monthly tours of the museum are taking a break until October, although a dedicated tour is planned for late September for a Women's group from Worksop. The Museum, though, will be very busy during the school holidays with the sound of youngsters enjoying all manner of activities. Further details will be available via the Museum and its usual information channels.

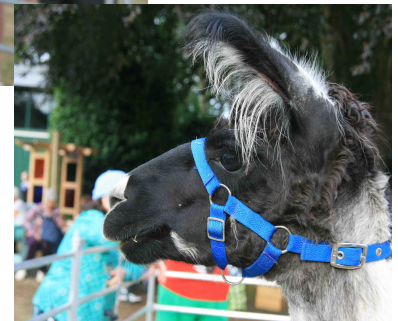
Although October may seem far away, The Friends will be holding their AGM on 16th October. The AGM will be followed by a talk by Angela Anwyl who will speak about the history of music in Retford. That is one for the diary!

Whilst the Museum Tours have now become an established part of the monthly activity at the Museum, the growing interest by local groups is very pleasing and is being encouraged. If your interest group or local organisation would like a dedicated tour, please contact the Museum or send an email to the email address below. Booking for the public tours, commencing again from 3rd October, is essential. Further information is available from fobm.tours@gmail.com or through the Museum.

If you would like to know more about The Friends and what they do, or would like to join them, please drop them an email to: fobm.membership@gmail.com. Membership application forms can also be found on their Facebook page or via the home page of the Bassetlaw Museum website.



[left] One of the Alpacas keen to meet humans!



[Right] Maybe this Llama had smelt the party's cakes – he was keenly looking in that direction!

Lost your Clarborough & Welham Newsletter?

We all get moments like 'where did I read that?' and then remember that it was in one of Clarborough & Welham's Newsletters – but you haven't kept it!

No worries, just go to our community website:

www.clarborough-welham.org.uk

and select the *C&W Newsletter* page from the home page's menu – copies of every issue since Spring 2010 can be read or downloaded in their pdf format.

Editor

"You know you're in love when you can't fall asleep because reality is finally better than your dreams."

**Dr. Seuss pen name of Theodor Seuss Geisel
(1904-1991)**



Bassetlaw
DISTRICT COUNCIL
— North Nottinghamshire —

Tennants' Report Repairs Online now!

Bassetlaw District Council (BDC) has launched a new way for Council Tennants to report non-emergency repairs, giving far more options than before.

New Repairs Portal

We've launched a new way for you to report non-emergency repairs to us, giving far more options than previously available!

www.bassetlaw.gov.uk/repairs



The new online reporting tool means that as well as being able to self-diagnose a problem, once you have booked an appointment, you can pick a timeslot, chase up a repair, or see a summary of the work that's been completed.

To have a look for yourself and to create an account, visit BDC's website.

This new tool hasn't replaced our freephone service, and you should still call us if you need to report an emergency repair.

Call Bassetlaw District Council Housing's Contact Centre on **0800 590 542** between 08:00 and 17:00, Monday to Friday. **The same number is also used to report emergency repairs outside these hours.**

For any tenants who would like more information on how to report a repair online, please contact the Tenant Engagement Team:

Call: 01909 533 263

Email: tenant.engagement@bassetlaw.gov.uk

Extra Virgin Olive Oil

The key difference between olive oil and extra virgin olive oil lies in their production and resulting qualities. Extra virgin olive oil (EVOO) is the highest quality, unrefined olive oil, produced by cold-pressing olives with no heat or chemical treatment. This results in a more flavourful, darker-coloured oil with a lower smoke point*, making it ideal for drizzling, dipping, or using in dressings.

Regular olive oil, on the other hand, is refined, often using heat and chemicals to extract the oil, resulting in a more neutral taste and higher smoke point, making it suitable for cooking and frying.

*The smoke point of olive oil, the temperature at which it begins to visibly smoke and potentially break down, typically ranges from 190°C to 210°C.

A quick test for extra virgin olive oil that was recommended to your Editor on a recent trip to Crete where we enjoyed both olive oil-based refreshments alongside tastes of the vinyard's own wines.

The demonstrated test was quite simple; give the bottle a rapid inverted to upright 'shake' – several times – and then hold it stationary in the inverted position. If the air bubble in the bottle quickly rises as a single or couple of bubbles, this suggests the oil is simply 'regular'. If the air bubble rises mainly as a mass of small bubbles this indicates 'extra virgin' status.

Further storage advice is to keep olive oil out of sunlight since this rapidly degrades the oil. For this reason oil should be purchased in dark, glass, bottles and kept in dark cupboards. Olive oil is a good solvent, so it can dissolve some components of plastic bottles.

Editor's footnote: On recent trips to the eastern Mediterranean, Aegean and Ionian Seas we have become grateful for meals starting with lovely local breads to dip into olive oil with Balsamic vinegar combined in little shallow dipping dishes.

Editor

"Be who you are and say what you feel, because those who mind don't matter, and those who matter don't mind."

Bernard M. Baruch (1870-1965)

Goacher's Farm Shop

Wood Lane, North Wheatley



The only traditionally grown Wheatley fruit.

Picked and PYO
**Strawberries, Raspberries, Cherries,
Plums, Apples, Pears etc**
Taste the difference!
Fresh and frozen

Also available;
**Asparagus, Honey, Jams,
Chutneys, Potatoes, Eggs,
Juices and Fruit pies**

Now serving hot drinks

For opening times please

Phone; **01427 880 341**

or **www.goforgoachers.co.uk**

Retford Badminton Club

We are a group of 'senior' men and women who like to play badminton for exercise and fun. We are looking for a few like-minded people to join us for, invariably, doubles games.



Our group plays from 19:00 to 21:00 on Wednesday evenings between September and May inclusive so come along to get a feel of our atmosphere – entertainment guaranteed!

We play at Barnby Memorial Hall, High Street, Blyth, S81 8EW. Our membership fees are very reasonable!

If you are interested in joining us, please contact...

Alan on 01777 703 991 or aghist@googlemail.com

Greg on 01777 700 918 or greg2know@gmail.com

Retford's Pilgrims Gallery

Discover the impact that the Mayflower Pilgrims had on popular culture, including some of the folklore and myths surrounding them. Learn about their lives before the Mayflower voyage, and explore the themes of separatism and religious persecution.

William Brewster, one of the District's most famous sons is remembered in Bassetlaw Museum located on Grove Street just off Retford's Market Square.

The Pilgrims Gallery is part of a £750,000 National Lottery funded project which commemorated the 400th anniversary of the Mayflower's voyage to America in 1620.

Entrance to the Gallery is free.

Open Source – means?

Open source, as a concept, has been around for a long time but has risen into public view as open source software has moved into a globally significant view.

Open source stands in contrast to proprietary software, where access to the source code is restricted, and users typically have limited rights to modify or redistribute the software. This is often visible in the provider's copyright agreement. In contrast, what has become known as the **copyleft agreement** gives users of such open source products freedom to copy, share, modify as they wish!

Retford Conference delivers for tenants

We are pleased the Conference which took place at The Well in Retford was a great success.

The event was attended by over 40 of our tenants, who took up the opportunity to come and speak to members of the Housing team, ask questions and had updates on key issues, such as empty properties and complaints.



We also heard from Darryl Plummer from Groundworks Five Counties, who talked about the fantastic projects they have led in Bassetlaw in partnership with BDC. Karen Smith from BDC also spoke about the new Tenant Repairs Portal and the opportunities this gives tenants to book and manage their repairs.

We would like to thank everyone who attended the event and who contributed to its success. We very much look forward to the next Conference in Worksop in November 2025.

Recycling centre details Opening times

Nottinghamshire's recycling centres are open every day of the year except Christmas Day, Boxing Day and New Year's Day. The opening times of our recycling centres vary depending on the time of year:

- **January and February: 08:00 to 16:00**
- **March: 08:00 to 18:00**
- **April to September: 08:00 to 20:00**
- **October: 08:00 to 18:00** ◀ **Note: Coming soon!**
- **November and December: 08:00 to 16:00**

Clarbrough Post Office

Opening hours:

Monday: 09:00-12:30

Tuesdays: 09:00-12:30

Wednesdays: Closed

Thursdays: 09:00-12:30

Fridays: Closed



**All usual
main P.O.
services**

**Halford Room, Clarbrough Village Hall
Main Street, Clarbrough, Retford, DN22 9LN**
If you have any queries, do not hesitate to contact:
Michael C.Carnall 07836 375 808 / 01427 884 469
michaelcarnall@yahoo.co.uk

The Allegra Voice Choir

2025 is turning out to be one of The Allegra Voice Choir's most successful years yet. Our numbers are growing and so are the requests for us to perform. The highlight of our Summer Season was our 'Around the World in 80 Days' Concert, which we performed in the beautifully refurbished Grove Street Methodist Church in Retford. The audience and acoustics were tremendous and it is always a pleasure to be joined by 3 Piece Suite, a piano and 2 flutes trio.



After our summer break we will be starting rehearsals for our Autumn & Winter programmes which include our annual concert on 20th September in St John the Baptist Church, Clarborough DN22 9NA and we will once again be joining the successful Christmas Concert at St. Saviours Church in Retford with Sean Ruane.

If you love to sing, and would like to get a taste of what we do, why don't you come along to our first rehearsal on Tuesday 2nd September at Clarborough Church, 19:00 till 20:30 to see if it is for you, we would be delighted to see you. If you would like more information you can contact Fran Smith on 07747 488 454 or email:

theallegravoicchoir@outlook.com

Judith Smith

Technology cutting electricity bills

Your editor has, over the years, created and maintained updates to one of his spreadsheets which has recorded home electricity meter readings. From these, he has calculated the electrical energy used per day. These results show some fascinating variations over the past 20+ years:

Date	Average use (kWh/day)
5 May 2005	8.85
17 May 2006	7.40*
19 May 2010	4.52
24 May 2011	4.17**
17 May 2012	1.88
19 May 2015	2.40
20 May 2020	1.82
25 May 2023	1.50
30 May 2025	1.42

*Solar hot water system installed on 19th December, 2006.

**Solar PV system installed on 19th September, 2011.

As these figures show, from 2005 to 2010 our electrical energy fell massively. This was a period when a range of electrical devices were updated to much more efficient versions – light bulbs and tv sets being the most visible examples. Hot water was, and still is when sunlight is insufficient, heated by gas not electricity.

Generating hot water and also electricity itself, from sunlight has had a massive impact.

Through the period of these figures our house occupancy has not changed.

Editor

Elected Representatives for Clarborough & Welham

Your Member of Parliament (M.P.) is Robert Jenrick (Conservative party) who was elected on 4th July, 2024.

Constituency Office: YMCA, Lord Hawke Way, Newark, NG24 4FH

Constituency Office: 01636 612 837

Parliamentary Office: House of Commons, London, SW1A 0AA

Parliamentary Office: 0207 219 7335

E-mail : robert.jenrick.mp@parliament.uk

Website: <http://www.robertjenrick.com/>

Your Nottinghamshire County Councillor for Misterton Division, is Mike Robertson (Reform UK party) who was elected on 1st May, 2025. Contacts for Mike are :

Email: cllr.mike.robertson@nottsc.gov.uk

Mobile: 07483 996723

Office: 0115 8040 394

Your Bassetlaw District Councillor (for the ward of Clayworth which covers Clarborough & Hayton) is Fraser McFarland (Independent) who was elected in 4th May, 2023. Fraser's contact details are :

Email: Fraser.McFarland@cllr.bassetlaw.gov.uk

Home mobile: 07341 568 602

Details correct on 15th June, 2025

Editor's BREAKING NEWS

Retford Business Developments - Openings

**Little
Marshmallow,**
Carolgate
Childrens clothes



Panini Grill,
Carolgate
Opening soon!

Also:
**Cake and
Dessert Shop,**
Market Square

**Nicole Olivia
Cake Designs,**
Bridgegate Centre
and finally...

**Retford
Craft
House,**
Beardsall's
Row.



C&W Newsletters reach many more readers than you might expect! Read our community website's C&W Newsletter pages.

Newsletter editorial deadlines

13th October (Winter issue)

12th January (Spring 2026 issue)

Clarborough & Welham Parish Council Meetings

8th September

20th October

1st Devember

12th January 2026

Meetings open 19:00 in Clarborough Village Hall

Agendas are always posted at least a week in advance on notice boards and on our Parish Council's website.

Retford's 2025 Big Market Days

- 19th July Punch & Judy
- 16th August Punch & Judy plus local retailer and RBF member 'Peningtons' will be celebrating their 70th Anniversary with various activities, raffles, offers and giveaways.
- 20th September 'Big Cheese'. Mr Mouse 'Stilton-walker' & Hathersage Brass Band. Raffle on cheese stall – everything 'cheese-related' would be highlighted and incorporated if possible. Anyone with a cheese offer of any kind please let Rbr know.
- 18th October Big Bird Stilt-walker & Halloween Mask making and Boggatt workshop.
- 15th November Two Stilt-walking Reindeer.
- 20th December Frost Fairy & Hathersage Brass Band.

Very, very late news!

A huge well done to Clarborough Primary School's reaching the finals of the Bassetlaw schools league in July!



Playing the cup finals at Worksop town football ground saw Clarborough Primary School lift the Jack Tarr trophy - the trophy is back where it belongs! We know he would be so proud and we are so sad that he passed away in early June.

Doncaster-Sheffield Airport Re-opening

News seems to be increasingly positive about 'our local airport's reopening' in Spring 2026.

Newsletter Advertising rates for a whole year of four consecutive issues

Full page £125.00

Half page £75.00

Quarter page £45.00

Business card size £25.00

Contact Greg (01777) 700 918
clarboroughwelham@gmail.com

Special rates for 'one off' insertions
Yet again, our greatest thanks go to our
tireless (!) team of volunteer distributors.