



Match My Project

An Introduction to the Match My Project platform



Contents

● What is Match My Project	03
● Key principles	04
● High level process	05
● Project examples	06
● Project data	07
● Some of our members	08
● Key features	09
● Within the procurement process	10
● Measurement	11
● 2 minute video tutorials	12
● Pricing	13



What is Match My Project?

- A marketplace platform that matches suppliers with community projects that need support, helping suppliers deliver Social Value in a targeted way
- We started working with Birmingham City Council in 2020
- We continue to work closely with our public sector partners, via a bi-monthly Super User Group
- We have received a number of awards for our work, including CIPS Award for Best Initiative to Deliver Social Value through Procurement and the Big Issue Changemaker award.

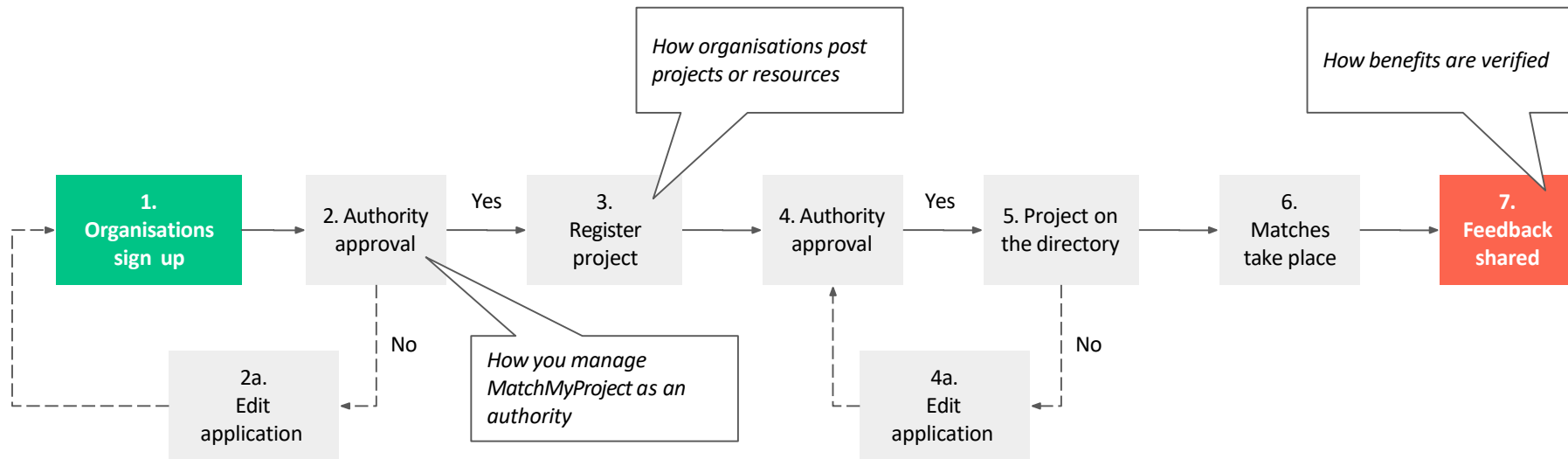


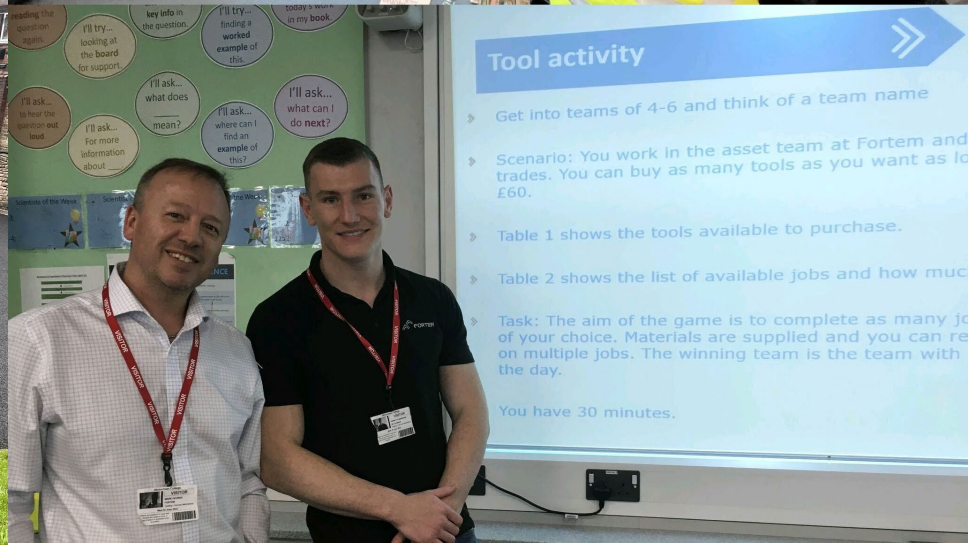
Key principles

- Matching marketplace - 'rules of the game' set by the contracting authority and subsequent assurance of key activities
- Verification of delivery provided by community organisations - no need for self-certification from suppliers or for assurance role for third party consultants
- Feedback and ratings 'keep people honest' - and incentivise good behaviours.



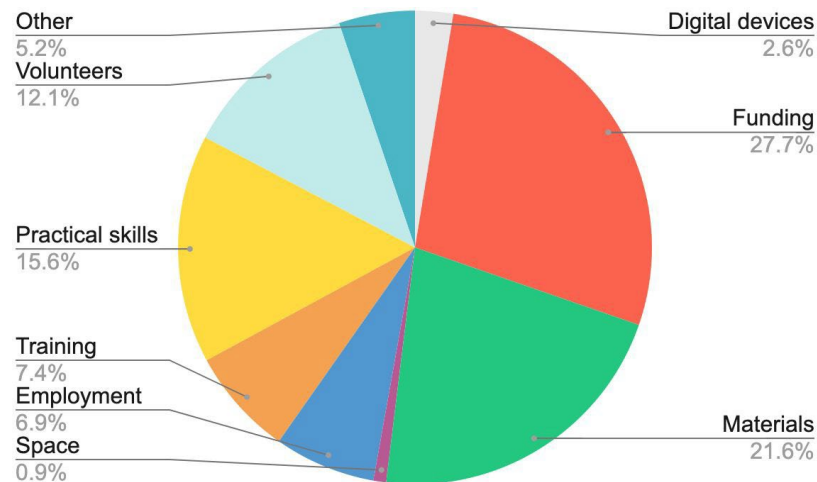
High level process map





Some useful numbers

- **Over 1,500** businesses, community organisations registered
- **Almost 600** community projects delivered
- **Approx £3k** average funding / project
- **4,000** hours committed by suppliers
- **88%** reduction in time spent 'doing Social Value'



Some of our members

Key features

- Easy registration process - less time than a grant application
- Contracting authority has oversight and assurance
- Projects tagged by your outcomes - creates strategic steer on resource allocation
- Pathways to Work features
- Email notifications for all stakeholders - we'll tell you when you have to log in
- Feedback, rating mechanisms and dashboards.



Within the procurement process

- Authorities include text in tender documents, signposting to Match My Project
- General model is: ask suppliers to deliver a quantity of projects in proportion to contract value
- Ongoing contract management benefits from community verification of resources delivered
- Community verification also supports performance management through qualitative feedback and ratings.



Measurement

- No financial proxies... yet, but do have input and output data
 - Current practice... selection of proxies used and attached to community projects... (see our [blog](#))
1. **NT7** – Hours supporting unemployed people into work
 2. **NT15** – Expert business advice to VCSEs
 3. **NT16** – Equipment or resources donated to VCSEs
 4. **NT17** – Voluntary hours donated to VCSEs
 5. **NT28** – Donations or in kind contributions to local community projects
 6. **NT29** – No of hours volunteering to support community projects.



2 min video tutorials

