

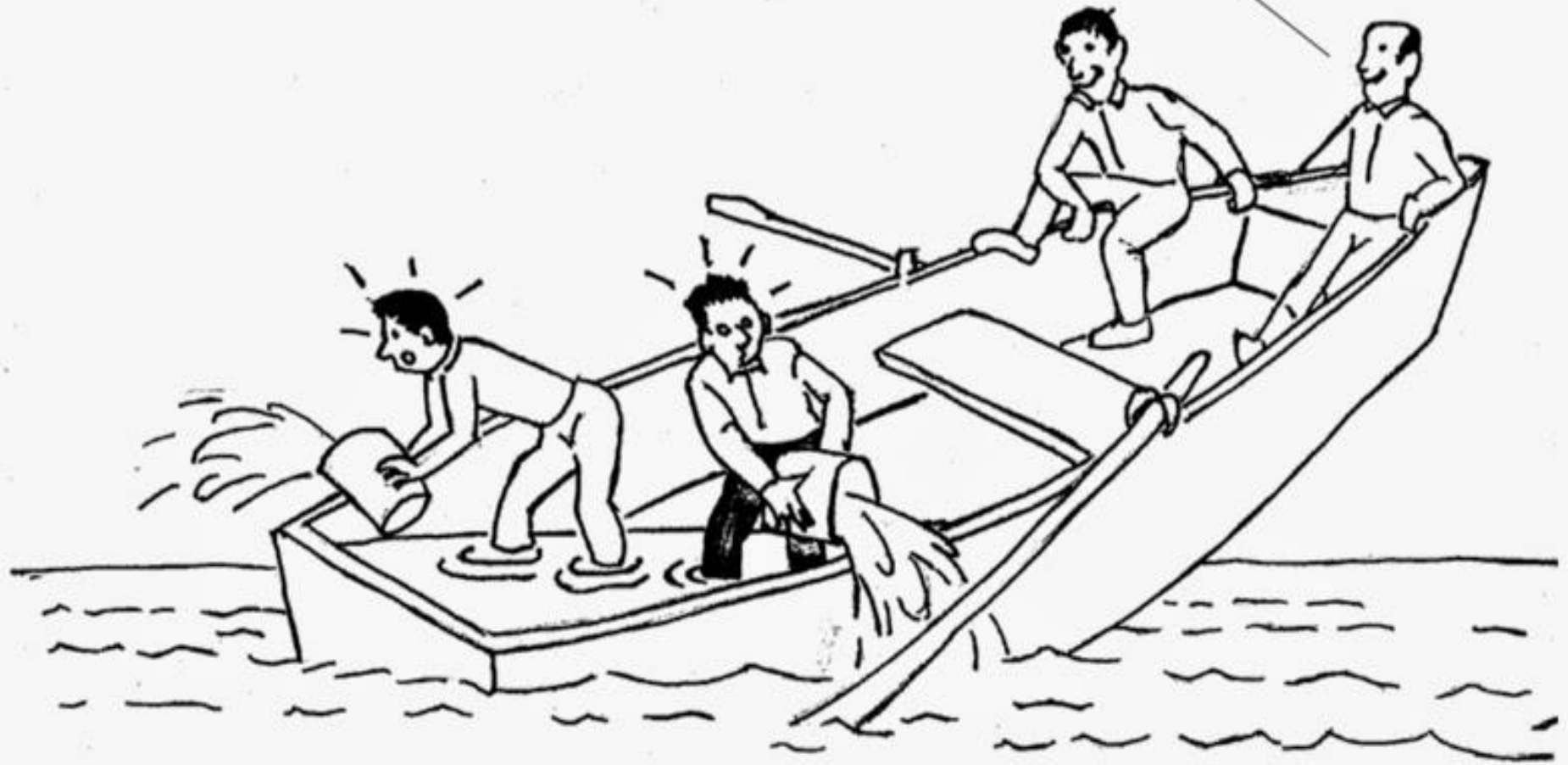
Dr Steve Kell

Larwood Surgery

Primary Care Home – making change happen



Sure glad the hole isn't at our end.



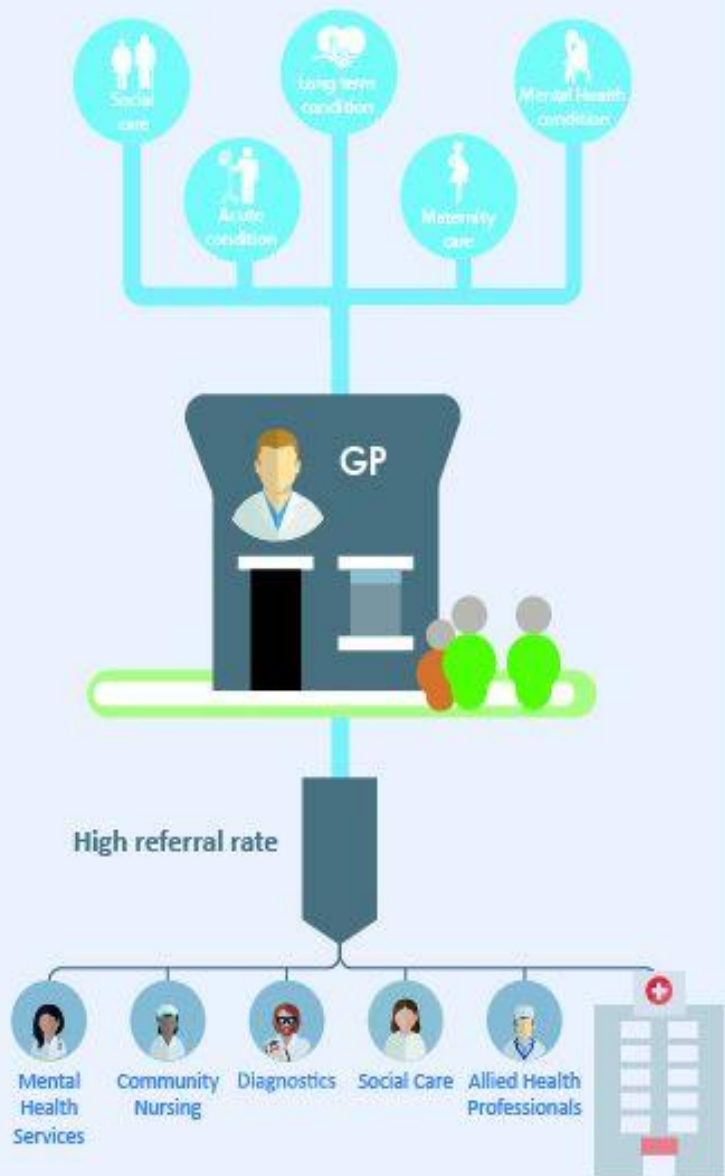
Larwood

- 5 sites, based in Worksop, North Nottinghamshire
- 32,500 patients
- 16 Partners, 3 salaried GPs, 3 Nurse Practitioners
- High levels of health need, social isolation, substance misuse, smoking, obesity.
- Urgent care demand high
- Significant experience – commissioning and provision
- RCGP Quality Practice Award
- Outstanding CQC rating

What is a Primary Care Home?

- The PCH is a form of *multispecialty community provider (MCP)* model. Its key features are:
- provision of care to a defined, registered population of between 30,000 and 50,000;
- aligned clinical financial drivers through a unified, capitated budget with appropriate shared risks and rewards
- an integrated workforce, with a strong focus on partnerships spanning primary, secondary and social care; and
- a combined focus on personalisation of care with improvements in population health outcomes.

CURRENT STATE

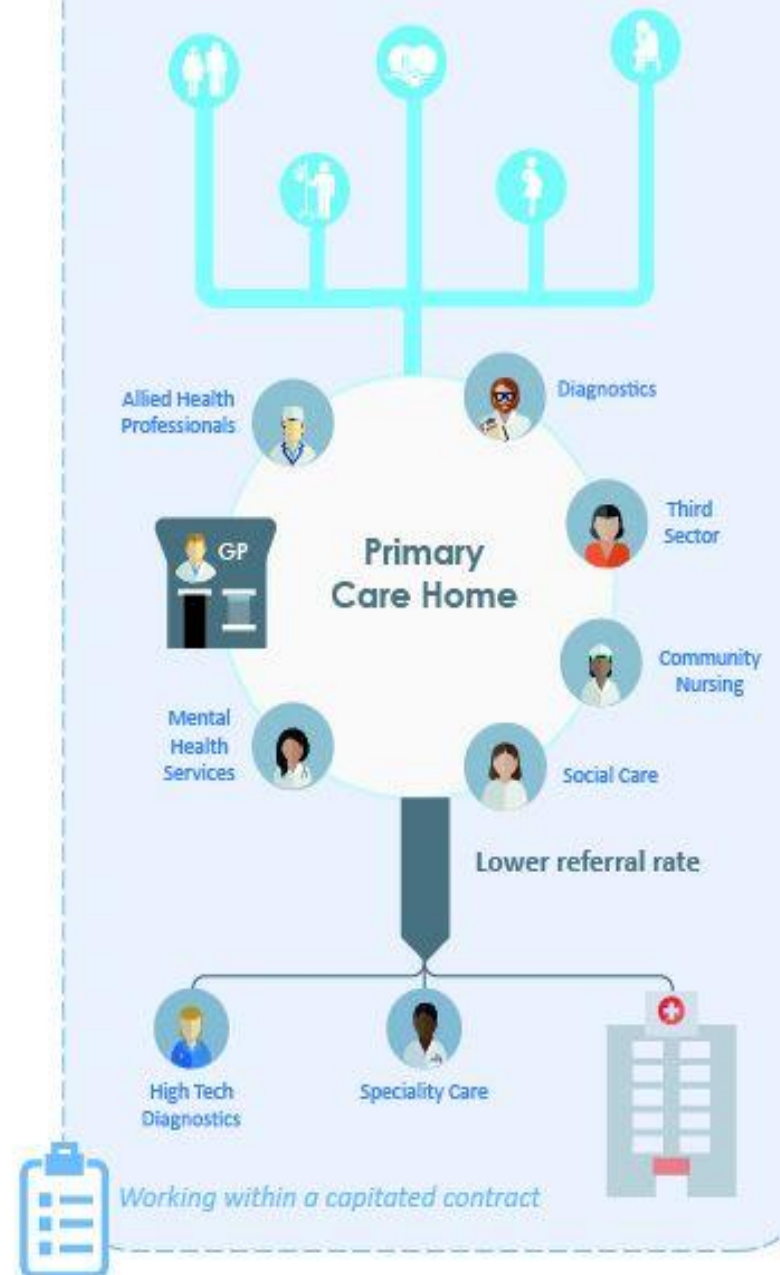


1

2

3

TRANSFORMED STATE



Working within a capitated contract

Monthly Provider Board:

- Larwood and Bawtry GPs
- Bassetlaw Health Partnerships
- Voluntary Sector
- Notts Healthcare Trust
- Doncaster and Bassetlaw NHS FT
- Bassetlaw CCG
- Social Care
- Bassetlaw District Council
- Healthwatch

Culture First

- Most important step
- Clear aims and ambitions
- What, How, Why
- Address fears early on
- Be clear about win-wins
- Transparent about your challenges
- Get board-level agreement where needed.
- Give people freedom to work collaboratively.



MEMORANDUM OF UNDERSTANDING IN RELATION TO A STRATEGIC PARTNERSHIP

This Memorandum of Understanding (“**MOU**”) is entered this day of 23rd March 2016 between:

- (1) Larwood and Bawtry Primary Care Home
- (2) Bassetlaw Health Partnerships, (Nottinghamshire Healthcare NHS Foundation Trust)

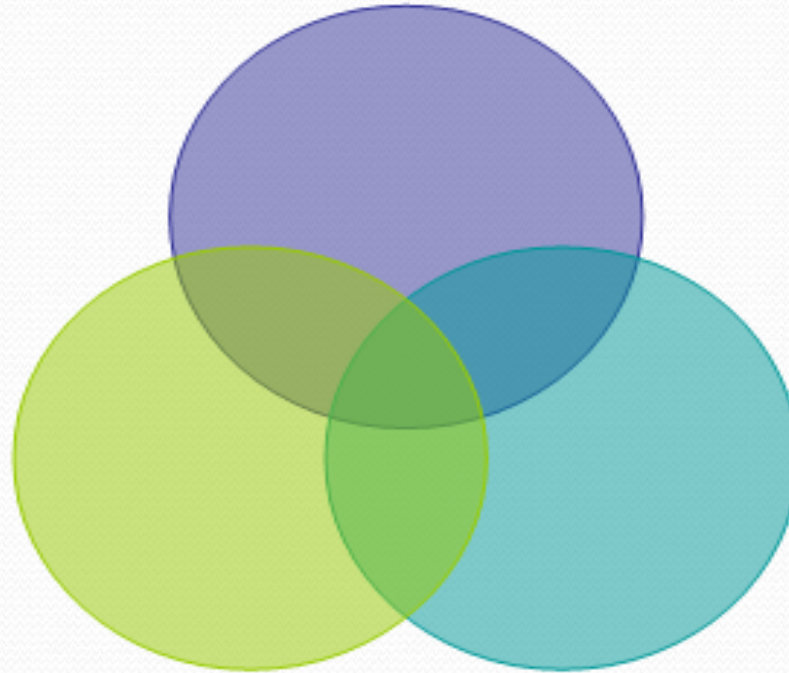
Individually a “Party” and together the “Parties”

Introduction

(A) Larwood and Bawtry and constituent General Practices have been awarded Primary Care Home (PCH) status, that being one of 15 national pilot sites specifically designed to further develop and implement new models of care identified within the Five Year Forward View (5YFV), within a capitated budget to a defined practice population of c30,000 patients. The purpose of this MOU is to provide clarity and understanding between both parties in terms of their respective roles and function in supporting the

Our Local Aims

Staff Support and Wellbeing



Better Patient
Outcomes

Efficient Ways of
Working